



NanoPhotometer[®] Firmware Installation Manual

Version 2.1



P 360



P 330



P 300



Compatibility:

The NanoPhotometer® firmware version 2.4.2 is compatible with all generations of NanoPhotometers, the NanoPhotometer®, the NanoPhotometer® Pearl and the NanoPhotometer® P-Class (P 300, P 330 and P 360).

Requirements:

- Microsoft Windows 2000 or later.
- Microsoft .Net Framework V2.0 or later.
- Windows 2000 systems will also require Microsoft Data Access Components V2.8 or later.

DO NOT DISCONNECT THE USB OR POWER CABLE FROM THE INSTRUMENT UNTIL THE UPDATER HAS COMPLETED. OTHERWISE THE INSTRUMENT WILL NEED TO BE RETURNED FOR REPAIR.

Download

All necessary files for the installation can be downloaded from the Implen Homepage www.implen.de

- NanoPhotometer® Unit Updater Version 1.4.5
- NanoPhotometer® Firmware (Version 2.4.2, October 2013)
- NanoPhotometer® USB Driver

Please store all files in the same local folder on your PC

Installation

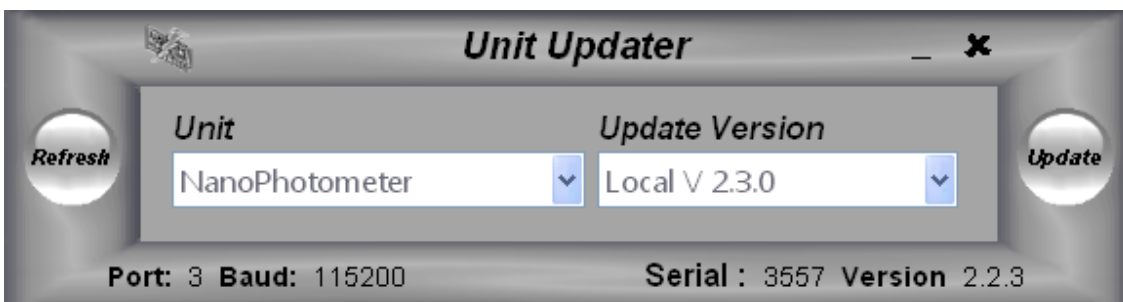
Please install the provided USB driver first. PVC Software users can skip this installation.

Connect the NanoPhotometer® to your PC via the provided USB cable and switch it on. Please shut down the PVC Software.

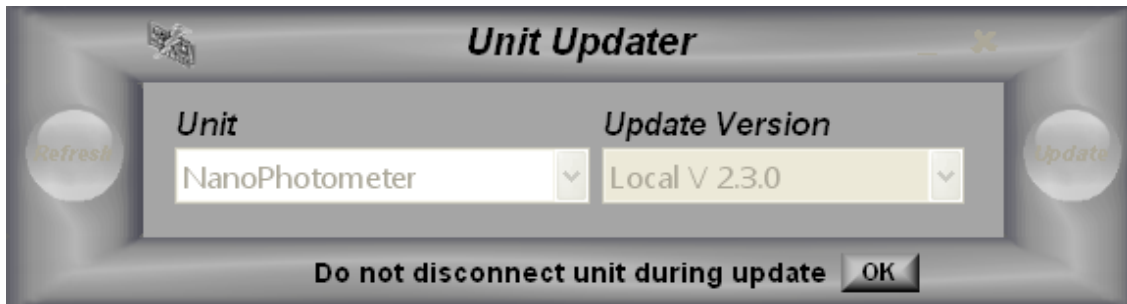
Launch the UnitUpdater.exe file by double clicking on the Icon. The system will automatically search for connected NanoPhotometer®.



After detection of the connected NanoPhotometer® and the Software update version 2.4.2, please press the Update button.

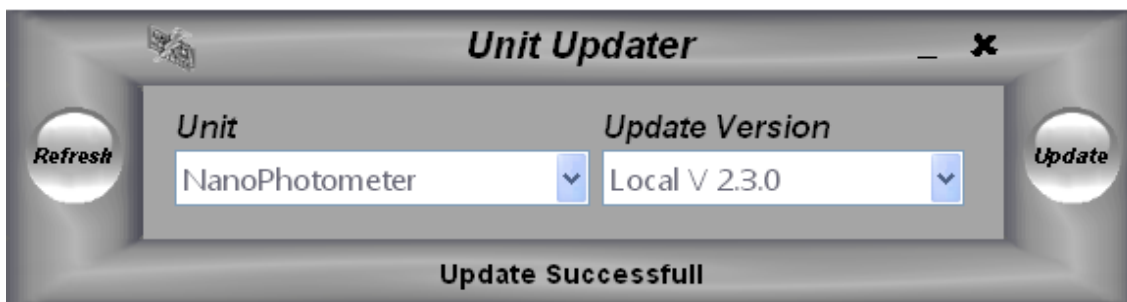


Confirm with the OK button and take care that the unit is not disconnected during the update.



The display of the NanoPhotometer® will now show the message
 “An external computer has taken control of the instrument”

Once the update has completed, successful installation will be shown in the status bar. The updated instrument will automatically perform a restart.



Please verify that the Baseline Compensation settings under “5”-Utilities, “4”-Preferences is set to “On” before starting new measurements.

Troubleshooting:

- If the system failed to detect a connected NanoPhotometer®, please check if PVC software is running. Shut down PVC Software by right-click on the icon in your task bar and choose Exit. By clicking the Refresh button the software will start again searching for connected units.
- If the system failed to detect the software update file, please ensure that the file is located in the same folder as the Unit Updater.exe file. If more than one software update file is present on your PC, please ensure to choose the most recent one for update.
- If the system failed to launch the unit updater, please ensure that a copy was saved to the local PC. If Microsoft .Net Framework is required, please follow the link on our homepage to download and install dotnetfx.exe

If you experience any problems during the installation process, please contact your next Implen Office or the Implen support team (support@implen.de).